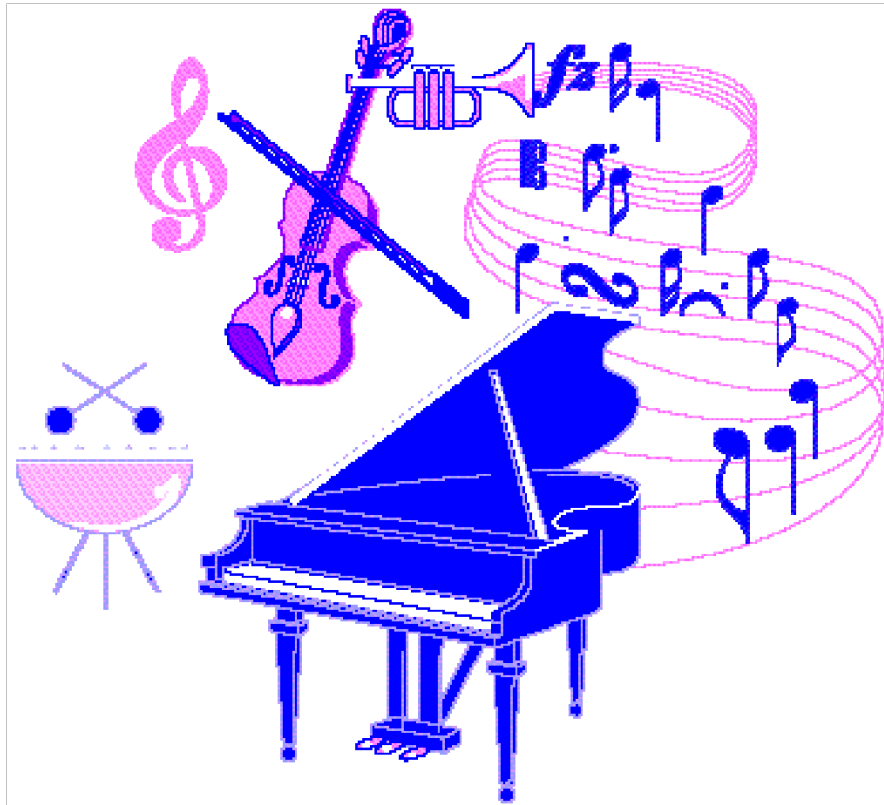


# 2012

## *Greater Bay Area Performing Arts Competition*

**Sponsored by Youth Focus Inc.**

**“dedicated to the advancement of youth”**



**November 2<sup>nd</sup> & 3<sup>rd</sup>, 2012**

***Bayside Community Church***

*(Located across from Willow Glen High School)*

***1901 Cottle Ave., San Jose, CA 95125***

**Entry Deadline: Tuesday - OCTOBER 16, 2012**

**(Postmarked or Delivered)**

**Phone: 408.448.5437(KIDS) or 1.866.939.6884**

**Visit Our Website at [www.youth-focus.org](http://www.youth-focus.org)**

**Male Checks Payable To: Youth Focus Inc.**

# Greater Bay Area Performing Arts Competition Sponsored by Youth Focus Inc. “dedicated to the advancement of youth”

September 3, 2012

Dear Instructor and Interested Parties:

This letter will serve to acquaint you with a venue of opportunity for growth for your students or you as an individual performer.

**On November 2<sup>nd</sup> and 3<sup>rd</sup>, 2012** our organization will again host the annual **The Greater Bay Area Performing Arts Competition** for the advancement of the arts at Bayside Community Church (located across the street from Willow Glen High School on Cottle Ave.) 1901 Cottle Ave. San Jose, CA.

Our organization has been sponsoring Youth Talent Competitions for some forty years.

Many of you are familiar with the annual Western Regional California State Talent Competition that we have sponsored for 44 years in the San Jose area. The competition brings together some 3,000 young people annually sharing their talents in a fun-filled wholesome family environment allowing them to grow and to advance their skills in the arts. In addition, we sponsor other competitions, which have been ongoing for a number of years and include the Greater Bay Area Talent and Performing Arts Competition, the Annual Alameda County Fair Talent Competition, County Fair Talent Jamboree, and the California State Spring Talent COMPETITION. We have many programs other than talent competitions that have a positive impact on the lives of young people. If you are interested in the other county and state programs, please email us at youthfocus@aol.com or call the Youth Focus office at 408.448.5437(KIDS) or 1.866.939.6884.

**"Everybody Wins and Nobody Loses"**, is the continuing theme of our annual competitions as we endeavor to continue to motivate excellence and achievement amongst our young participants. Every young person who participates in the competition receives an award that they take home. This allows each participant to go away feeling a sense of pride as well as sense of accomplishment.

Students leave our competitions feeling exhilarated with a renewed enthusiasm about their art form with a desire to work harder striving for a greater level of excellence.

Knowing you might very much want the opportunity for your students to participate in this very worthwhile youth event, we are forwarding an application for you to share with your students.

If you desire further information please do not hesitate to contact our offices at:

**Youth Focus Inc., 1901 Cottle Ave, San Jose, CA 95125**  
**Call Toll Free: 1.866.939.6884**  
**PHONE: 408.448.5437 (KIDS) •email: youthfocus@aol.com**  
**VISIT OUR WESITE AT: [www.youth-focus.org](http://www.youth-focus.org)**

Sincerely,  
Wm. R. Smethers  
Executive Director

©Copyright -2012 by Youth Focus, Inc. All rights reserved. No portion of this material included in this publication may be used without the written authorization of Youth Focus, Inc.

\*\*\*PLEASE NOTE: THE COMPETITION ON FRIDAY NIGHT BEGINS AT 6 PM AND DOES NOT IMPEDE UPON SCHOOL HOURS.

## Official Rules and Regulations

### 1. QUALIFICATION FOR ENTRY/AGE AND LEVEL OF ENTRANT

The competition is open to any resident within the Western United States between the ages of 3 thru 26. Age of entrant on the last day of this year's competition determines entrant's participation in any age division. **Entrant may be either amateur or professional**

### 2. CONDITIONS OF PARTICIPATION

Participants understand and recognize the risks of physical injury inherent in dance and performance and willingly assume responsibility for those conditions of participation at their own risk. It is agreed and understood that participants will not hold Youth Focus Inc., its agents directors, officers, employees or the Competition Officials, liable for injuries sustained or illnesses contracted by them when in attendance and or participating in any phase of the competition. Participants give their permission to Youth Focus Inc., to use their photographs or appearance in video taping in connection with advertising or news coverage of the Competition.

### 3. LEVEL OF PARTICIPATION

To provide equitable competition the following levels of participation will be established provided there are sufficient entries to establish such designations:

•**GENERAL DIVISIONS**--for Students who have studied in excess of three years.

•**NOVICE DIVISIONS**--for Students who have studied three years or less.

**Novice and General Divisions will be combined if there are inadequate entries to constitute independent divisions.**

### 4. DIVISIONS

Divisions are divided/grouped according to age whenever possible. If there is insufficient participation in any Division, ages will be grouped according to mixed ages.

### 5. ENTRY FEES

•**SINGLE ENTRY--\$48.00 PER ENTRY**

•**DOUBLE--\$24.00 per person PER ENTRY**

•**GROUP ENTRIES-- \$16.00 PER PERSON FOR THE FIRST THREE PARTICIPANTS AND \$10.00 PER PERSON THEREAFTER**

**MAKE CHECKS PAYABLE TO YOUTH FOCUS INC. MAIL CHECKS TO: YOUTH FOCUS INC. 1620 COTTLE AVE. SAN JOSE, CA 95128**

Entry fees shall be paid in advance. No money will be collected for entries during the conduct of the competition. NO REFUNDS will be given to participants who fail to appear at the competition. NO REFUNDS will be given to improperly filed entries. All entry forms must be filled out properly with the correct information. Each entry/act will be considered as a separate entry and will be charged a separate entry fee accordingly. **THERE WILL BE A \$20.00 FEE CHARGED ON ALL RETURNED CHECKS.**

### 6. LENGTH OF ACT

LENGTH OF TIME FOR ENTRIES AND PERFORMANCE TIMES SHALL NOT EXCEED:

**(5) five minutes in length for all performance divisions except Divisions K and 11 WHICH ARE ALLOWED up to (7) seven minutes in length. All numbers will be timed by an official TIMEKEEPER. Any act exceeding the official time limit will be assessed a 50% penalty off the Final Ballot and will be precluded from receiving the Overall Grand Champion placement.**

### 7. ENTRY LIMITATIONS:

There are no entry limitations. Participants may enter as many times as they desire.

### 8. GROUPS WITH MIXED AGES SHALL BE AVERAGED!

For all doubles and groups, the average age determines the age division into which you enter the entry. Add the ages of all the entrants, then divide by the number of entrants. When an average age ends in .5 or above, round off to the next age Division.

### 9. QUALIFICATION OF DIVISIONS

Divisions are age graded according to age whenever possible and judged upon the •**AMERICAN SYSTEM OF JUDGING. Any division with less than three (3) entries will be moved to the next OLDEST available age division qualifying for competition in accordance with the specifications of entry, i.e., singles to singles, doubles to doubles, and groups to groups. In the case of Double Entries if there are less than three (3) Double entries, Doubles will be moved to Groups. Novice and General Divisions will be combined if there are inadequate entries to constitute independent stand-alone divisions.**

**When there are inadequate entries within a specific Division the entry will be judged as a single entry adjudicated on the •DANISH SYSTEM of judging and awarded a Gold, Silver or Bronze level award.**

**The AMERICAN SYSTEM OF JUDGING is comparative judging in relationship to each entry within the Division. The system of judging ranks each act against one another WHERE BY THE TOP ENTRY IN THE EYES OF THE JUDGES IS AWARDED THE HIGHEST PLACEMENT, THE NEXT ACT THE NEXT HIGHEST PLACEMENT ETC. THE PLACEMENT IS BASED UPON A POINT SYSTEM THAT RANKS EACH PARTICIPANT BASED UPON A SET OF STANDARDS ESTABLISHED FOR COMPARATIVE JUDGING.**

**The DANISH SYSTEM OF JUDGING judges a single act upon the individual merit of the individual's performance without regard to any other act. The system of judging evaluates the talent presentation on its own merit against a recognized standard/scorecard on a point system for individual placement.**

### 10. COSTUME/APPAREL

Acts must be presented and performed in costumes or apparel suitable to a youth public performance. Extremely low-cut necklines, revealing or French-Cut costumes will be considered inappropriate for youth public performances and will be judged down accordingly.

### 11. CHECK IN TIME

Participants are requested to check in for PERFORMANCE TIMES and REGISTER THEIR TAPES/CD'S ONE (1) HOUR BEFORE THEIR SCHEDULED PERFORMANCE TIME, except in the case of the very start of the competition in the morning, participants are requested to check in for PERFORMANCE TIMES and REGISTER THEIR TAPES/CD'S ONE HALF (1/2) HOUR BEFORE THEIR SCHEDULED PERFORMANCE TIME. Any participant who causes a delay in the competition will be penalized 25% OFF THE FINAL BALLOT. **In instances where the competition is running ahead of schedule, Competition Officials reserve the right to CLOSE THE DIVISION UP TO ONE (1) HOUR BEFORE THE SCHEDULED PERFORMANCE TIME LISTED AND TO CONSTITUTE THE PARTICIPANTS LATE AND IN VIOLATION OF THE RULES AND REGULATIONS OF THE COMPETITION AND TO DISQUALIFY THEM ACCORDINGLY AND TO BEGIN THE NEXT AVAILABLE DIVISION.**

### 12. JUDGING

**A.** Participants will be judged by a panel of competent and knowledgeable judges. Entrants and parents agree that the time, manner and method of Judging shall be solely within the discretion of the Competition Officials and Youth Focus Inc. and the decision of its judges will be final in all cases.

**B. Communication** between entrants, friends, parents, or instructors with the Judges is to be restricted.

**C.** If an act (participant/entrant) does not complete his/her performance for any reason EXCEPT for mechanical or technical difficulty relating to the competition equipment, the ACT/ENTRY will not be judged nor rescheduled for re-audition/performance.

**D.** Entrants shall not be judged down for mechanical or technical difficulty due to the failure of applicable equipment or for slippery floor or stage conditions beyond entrant's control.

**E. Judges Rules Committee:** Any discrepancies or questions which may arise relating to judging procedures, results, awards, etc. shall be referred to the Judges Rules Committee for consideration and deliberation. The decision of the Judges Rules Committee will be final in all cases.

### 13. SCHEDULING-AUDITION TIMES AND LOCATIONS

Competition Officials reserve the right to assign times and locations for PERFORMANCE TIMES at its discretion. The decision of the Competition Officials will be final in all cases regarding scheduling.

### 14. ACCOMPANIMENT FOR PARTICIPANT/ENTRANT PERFORMANCE

If recorded music is used for performance, the following rules will be strictly enforced:

**A.** All music must be recorded on cassette tapes or CD's. CD's must be marked to the selection to be used. A second back up tape or CD should be available in cases of emergencies.

**B.** It is recommended that only one song be recorded on each tape or CD!!

**C.** Tapes must be rewound and cued to the starting position when submitted to the Registration Desk. Any tape not cued at the beginning of the act when submitted to the Registration Desk will result in a 25% penalty off the final ballot.

**D.** Vocal performers in the Vocal Divisions may not perform a vocal solo to a professional recording with a professional vocal artist. However they may perform to tapes/CD's with background/backup singers which are created for vocal performance.

### 15. EQUIPMENT AVAILABLE

Equipment available: Tuned piano, hand (not cordless wireless) or stand mic's (6) only, cassette and CD players with variable speed. **Please note you must use the competition sound equipment. You may not under any circumstances bring in your own equipment. Wireless microphones are not available for use in the competition due to the technical difficulties often experienced with wireless equipment.**

## 16. PRESENTATION OF ACTS

**A. VOCAL PERFORMANCES**--Movements may be incorporated in the presentation of the performance to accentuate the vocal performance and to carry out the theme of the song being presented i.e., sways, small kicks, movements from side to side such as walking, genuflecting, arm movements, Cha Cha steps, grapevine, box steps, jazz diamonds, waltz steps or simple turns, etc., all for the purpose of accentuating the presentation musically. Other than the above movements, there is to be absolutely no dance steps incorporated in the presentation of any vocal performance. Tap shoes with taps and pointe' shoes are expressly prohibited from being used in any of the VOCAL PERFORMANCE divisions. **More extensive choreography may be used in Divisions G and 7 in keeping with musical comedy/theater performances.**

**B.** Acts must be family oriented equivalent to a G rating for public performance. Acts may depict conflict which are to be enacted out or dramatized IN GOOD TASTE.

**C.** No special lighting such as black lights, or strobe lights will be permitted. Due to fire regulations, fire numbers are not permitted. Swords and knives on stage are prohibited.

**D.** Props are allowed within the division if they are functional and relevant to the entrant's performance. They must be free standing. Special hanging scenery or hanging backdrops are not permitted. There are to be no props used for decorative or aesthetic purposes whatsoever. **PROPS THAT REQUIRE ELECTRICAL HOOK-UPS ARE EXPRESSLY PROHIBITED DUE TO SAFETY PROVISIONS AND TIME LIMITATIONS (ELECTRIC GUITARS ARE EXCEPTED FROM THIS RULE).** Entrant and parents are solely responsible for the moving of stage props, i.e., gymnastic equipment, acrobatic props, mats and other staging items on and off stage.

**E.** Any number utilizing props or band equipment which causes an unreasonable delay in the competition will be penalized a 75% penalty off the final ballot. **STAGE PROPS MUST BE ON STAGE WITHIN A REASONABLE TIME FRAME.**

**F.** Any number utilizing theatrical makeup which causes a delay in the competition will be penalized a 50% PENALTY OFF THE FINAL BALLOT. AN ACT MUST BE READY TO PERFORM WHEN ANNOUNCED. The only exception to this rule is when an act is performing in another audition area simultaneously with the announced act as scheduled by Competition Officials.

**G.** For the safety of the participants and in accordance with insurance provisions, shoes are to be worn for all dance numbers or participant(s) will be assessed a 50% penalty off the final ballot. Polynesian and Hawaiian numbers are excepted from this rule.

**H.** Entrants performing in several divisions will perform the act or number as determined by Competition Officials. Any instructor, parent or individual refusing cooperation in this regard will be assessed a 50% penalty off the final ballot.

**I.** Upon completion and the conclusion of all performances, participants are not to present a time consuming final bow or a traditional reverence' at the completion of the entrants act, thus causing a delay in the competition. Acts are to leave the stage immediately following the completion of their act with the presentation of a short bow if applicable or a 25% penalty off the final ballot will be imposed

**J. THERE IS TO BE ABSOLUTELY NO FOOD OR DRINK IN THE BACK STAGE OR DRESSING AREAS.**

**K.** There is to be no smoking in the auditorium or backstage areas in accordance with local ordinances.

**L.** There is to be no **PROFANITY** in the presentation of any act or disrespectful reference to **DEITY** or the act will be disqualified.

## 17. GENERAL RULES OF CONDUCT

**A. MISCONDUCT:** Any misconduct or use of profane language on the part of any teacher, parent, or spectator is prohibited. Poor sportsmanship i.e., booing, jeering, etc. will not be tolerated. Spectators and entrants shall give their undivided attention during all performances. There is to be no noise in the auditorium under any circumstances. Disqualification and /or 50% PENALTY will be imposed off the final ballot for misconduct.

**B. PETS:** No pets will be allowed under any circumstance in the competition areas except for Seeing Eye or hearing dogs.

**C. PICTURE TAKING:** No picture taking of any kind will be allowed in any of the competition areas. This rule includes flash or non-flash camera or video cameras. Any kind of camera work whatsoever is expressly prohibited. A 50% PENALTY WILL BE IMPOSED OFF THE FINAL BALLOT FOR ANY INFRACTION IN THIS REGARD.

**D. AUDIO RECORDING:** Audio recording is expressly prohibited. A 50% penalty will be imposed off the final ballot for violations of this rule.

**E. INSTRUCTORS/COACHES TECHNICAL PENALTY: Any Instructor/Coach or Teacher conducting themselves in an unprofessional manner, causing a disturbance, or acting in a manner which reflects hostility, poor sportsmanship, and sets a poor example for participants and spectators will under such circumstances be issued a technical penalty and barred from the balance of the competition.**

## 18. ANY RULES NOT COVERED

Any rules not covered under these official rules and regulations will be governed by the TALENT COMPETITION Officials and Youth Focus, Inc.

**19. APPLICATION DEADLINE** --delivered or postmarked to Youth Focus Inc., 1901 Cottle Ave., San Jose, CA 95125 by **MONDAY OCTOBER 17<sup>TH</sup> 2011.** For hand delivered entries the office closes at 5:00 P.M. *any applications received past the stated deadline will be assessed a 10% penalty late fee.*

## 20. LOST ARTICLES

Neither **YOUTH FOCUS INC., NOR THE COMPETITION OFFICIALS WILL BE HELD RESPONSIBLE FOR ANY LOST ITEMS OR DAMAGE TO ANY EQUIPMENT OR ARTICLES OF ENTRANTS.**

**21. PARKING**--There is no charge for parking.

## 22. PROCEDURES

**A.** Instructors are invited to the sound table when needed to adjust the speed of an entrant's music, or to call mic cues for soloists/vocal groups. Instructors wishing to engage in this practice are to register at the registration desk and receive a badge for such purposes.

**B.** Acts, which are, entered in error in any division by parents, teachers, or participants will be judged on the merit system of judging but will be disqualified for consideration in relationship to the AMERICAN SYSTEM OF JUDGING.

## 23. PROTEST PROCEDURES

Any individual wishing to file a protest must do so in accordance with the following provisions:

**A.** Protest must be filed within one (1) hour of the alleged violation.

**B.** Protest must be filed in writing and signed with the name of the individual submitting the protest. In addition, the individual filing the protest must give; FULL NAME, ADDRESS, CITY, STATE, and ZIP AND PHONE NUMBER

**C.** Protest must be accompanied by a \$100.00 cash payment, which is **non-refundable and non-transferable.** No checks will be accepted.

**D. Protests must be based upon violation of the rules and regulations of the competition. Judging results will be final in all cases and cannot be protested.**

**E.** Individuals filing protests must be able to show proof of violations. Protests will not be accepted predicated upon alleged situations or conjecture.

**F.** All protests will be adjudicated by the Judges Rules Committee whose decision will be final in all cases. Protests will not be reopened for reconsideration after a ruling has been made by the Judges Rules Committee.

**G.** Judging results are final in all cases and protests regarding judging results will not be accepted in any case.

**24. PRINTING OR TYPOGRAPHICAL ERROR OR MISPRINTS YOUTH FOCUS INC., AND THE COMPETITION OFFICIALS WILL NOT BE HELD RESPONSIBLE FOR ANY PRINTING OR TYPOGRAPHICAL ERRORS. ERRORS IN THIS REGARD WILL BE ACTED UPON BY THE JUDGES RULES COMMITTEE AND ITS DECISION WILL BE FINAL IN ALL CASES. PLEASE NOTE: LEGIBLY WRITTEN APPLICATIONS WILL HELP MINIMIZE MISPELLED NAMES AND SONG TITLES AND ERRORS IN SCHEDULING.**

# •AWARDS•

## ACHIEVEMENT AWARDS

Each act entered receives an Achievement/Merit Award depending upon its placement and ranking.

## AMERICAN SYSTEM OF JUDGING

Upon the completion of each division, the judges will cast a final ballot utilizing the AMERICAN SYSTEM OF JUDGING. Grand Champion placements will be awarded to the six acts in the Division garnering the highest number of points. Championship winners may be awarded more than one placement per division championship ballot where applicable.

## DOUBLE GRAND CHAMPIONSHIP

**Any act receiving a perfect score in the Overall Grand Championship placement from the entire panel of judges will be constituted a Double Grand Champion.**

## TYPES AND KINDS OF AWARDS

Youth Focus Inc., will determine the types and kinds of awards to be awarded solely at its discretion.

## PICK UP OF AWARDS

**AWARDS MUST BE PICKED UP ON THE DAY OF THE COMPETITION THEY ARE AWARDED OR THE AWARDS WILL BE FORFEITED BY THE ENTRANT (S)-PARTICIPANT (S) AND CANCELED WITHOUT FURTHER NOTICE.**

# OFFICIAL ENTRY FORM

MAIL APPLICATIONS TO: YOUTH FOCUS INC., 1901 COTTLE AVE. SAN JOSE, CA 95125  
MAKE CHECKS PAYABLE TO YOUTH FOCUS INC.

**Entry Deadline: TUESDAY OCTOBER 16th, 2012 (Postmarked or Delivered)**

Competition will be held November 2<sup>nd</sup>\*\*\* and 3<sup>rd</sup>, 2012 at Bayside Community Church (located at 1901 Cottle Ave. San Jose, CA. ) EXACT TIME OF AUDITION TO BE MAILED. Phone 408.448.5437 (KIDS) or 1.866.939.6884 for information. **Please Note:** If you wish additional applications, you may photocopy the original or write for additional applications. Each individual act and audition must be submitted on a separate form. **IMPORTANT:** For further information, please read OFFICIAL RULES AND REGULATIONS. **PLEASE COMPLETE BOTH SIDES OF THIS APPLICATION IF APPLICABLE. \*\*\*PLEASE NOTE: THE COMPETITION ON FRIDAY NIGHT BEGINS AT 6 PM AND DOES NOT IMPEDE UPON SCHOOL HOURS.**

**USE FOR SINGLE ENTRY ONLY: LIST ONLY ONE ENTRY PER ENTRY FORM!!! PLEASE PRINT**

NAME OF ENTRANT: \_\_\_\_\_ AGE \_\_\_\_\_ DATE OF BIRTH \_\_\_\_\_

ADDRESS \_\_\_\_\_ CITY \_\_\_\_\_ ZIP \_\_\_\_\_

PHONE: HOME: ( ) \_\_\_\_\_ WORK: ( ) \_\_\_\_\_ CELL: ( ) \_\_\_\_\_

email: \_\_\_\_\_

NAME OF SONG \_\_\_\_\_

**USE FOR DOUBLE AND GROUP NUMBERS ONLY: LIST ONLY ONE ENTRY PER ENTRY FORM!!! PLEASE PRINT**

NAME OF GROUP: \_\_\_\_\_ AVERAGE AGE \_\_\_\_\_

(List the Name of the Group i.e. *Starlite Dancers* or if Doubles list last names of individuals. List names of individual participants on the back of this form)

NAME OF SONG \_\_\_\_\_

CONTACT PERSON: \_\_\_\_\_

ADDRESS \_\_\_\_\_ CITY \_\_\_\_\_ ZIP \_\_\_\_\_

PHONE: HOME: ( ) \_\_\_\_\_ WORK: ( ) \_\_\_\_\_ CELL: ( ) \_\_\_\_\_

email: \_\_\_\_\_

**THIS PORTION OF THE FORM MUST BE FILLED OUT!!!!!! NO EXCEPTIONS!!!!!!**

STUDIO NAME \_\_\_\_\_ TEACHER \_\_\_\_\_

ADDRESS \_\_\_\_\_ CITY \_\_\_\_\_ ZIP \_\_\_\_\_

PHONE: HOME: ( ) \_\_\_\_\_ WORK: ( ) \_\_\_\_\_ CELL: ( ) \_\_\_\_\_

email: \_\_\_\_\_ FAX: ( ) \_\_\_\_\_

**General Division's: For Students who have studied in excess of three years. Check Appropriate BOX for Area of Competition.**

D-Song and Dance  E-Vocal Popular  F-Vocal Country  G-Vocal Broadway/Show Tunes  H-Vocal Songs of Inspiration  I-Vocal Performance All Other Categories  J- Vocal Performance Open  K- Instrumental

**Novice Division: For Students who have studied three years or less. Check Appropriate BOX for Area of Competition.**

4- Song and Dance  5-Vocal Popular  6-Vocal Country  7-Vocal Broadway/Show Tunes  8-Vocal Songs of Inspiration  9-Vocal Performance All Other Categories  10-Vocal Performance Open  11-Instrumental

LENGTH OF TIME FOR ENTRIES AND PERFORMANCE TIMES SHALL NOT EXCEED: (5) five minutes in length for all performance divisions except Divisions K and 11 WHICH ARE ALLOWED up to (7) seven minutes in length. All numbers will be timed by an official TIMEKEEPER. Any act exceeding the official time limit will be assessed a 50% penalty off the Final Ballot and will be precluded from receiving the Overall Grand Champion placement.

FEE ENCLOSED \_\_\_\_\_ \$48.00 FOR SINGLES-- \$24.00 PER PERSON FOR DOUBLES--AND \$16.00 PER PERSON FOR GROUPS FOR THE FIRST THREE PERSONS AND \$10.00 PER PERSON THEREAFTER--PLEASE NOTE: FEE MUST ACCOMPANY THIS FORM!. NO REFUNDS will be given to participants who withdraw from competition, cancel or fail to appear at the competition. NO REFUNDS will be given to improperly filed entries. All entry forms must be filled out properly with the correct information. **MAKE CHECKS PAYABLE TO YOUTH FOCUS INC.**

**MASTER CARD AND VISA ACCEPTED: CHECK APPROPRIATE BOX:  VISA  MASTER CARD**

NAME ON CARD \_\_\_\_\_

CARD NUMBER \_\_\_\_\_ EXPIRATION DATE: \_\_\_\_\_

SIGNATURE OF CARD HOLDER \_\_\_\_\_

**Please Complete Information On Back Side of This Form**

**CHECK EQUIPMENT REQUIRED TO BE SUPPLIED BY THE COMPETITION:**

- cassette/CD player
- hand mic •(NOT A CORDLESS MIC)
- hand stand mic (up to 6)
- piano
- music stand
- other: (please list)

**PLEASE LIST PROPS THAT YOU WILL BE USING AND BRINGING TO THE COMPETITION. LIST ITEMS BELOW:**

Please note you **must use the competition sound equipment**. You may not under any circumstances bring in your own equipment. Wireless microphones are not available for use in the competition due to the technical difficulties often experienced with wireless equipment. NOTE: Props are allowed within the division if they are a functional and relevant to the entrants performance. They must be free standing. Special hanging scenery or hanging backdrops are not permitted. There are to be no props used for decorative or aesthetic purposes whatsoever. **PROPS THAT REQUIRE ELECTRICAL HOOK-UPS ARE EXPRESSLY PROHIBITED DUE TO SAFETY PROVISIONS AND TIME LIMITATIONS (ELECTRIC GUITARS ARE EXCEPTED FROM THIS RULE)**. Entrant and parents are solely responsible for the moving of stage props, i.e., gymnastics equipment, acrobatic props, mats and other staging items on and off stage.

**OFFICIAL ENTRY FORM**  
**FOR DOUBLES AND GROUPS--\*AVERAGE AGE \_\_\_\_\_**

**LIST ENTRANTS PARTICIPATING IN THE COMPETITION**

1.		AGE: _____	DATE OF BIRTH _____
2.		AGE: _____	DATE OF BIRTH _____
3.		AGE: _____	DATE OF BIRTH _____
4.		AGE: _____	DATE OF BIRTH _____
5.		AGE: _____	DATE OF BIRTH _____
6.		AGE: _____	DATE OF BIRTH _____
7.		AGE: _____	DATE OF BIRTH _____
8.		AGE: _____	DATE OF BIRTH _____
9.		AGE: _____	DATE OF BIRTH _____
10.		AGE: _____	DATE OF BIRTH _____
11.		AGE: _____	DATE OF BIRTH _____
12.		AGE: _____	DATE OF BIRTH _____
13.		AGE: _____	DATE OF BIRTH _____
14.		AGE: _____	DATE OF BIRTH _____
15.		AGE: _____	DATE OF BIRTH _____

**\*AVERAGE THE AGE \_\_\_\_\_** For all doubles and groups the average age determines the age division into which you enter the entry. Add the ages of all the entrants, then divide by the number of entrants. When an average age ends in .5 or above, round off to the next age division.

**RELEASE FORM**

In consideration of the mutual covenants set forth herein, the parties agree as follows:

1. Releasor(s) desires to enter and participate in the GREATER BAY AREA PERFORMING ARTS COMPETITION produced by Youth Focus, inc., and the hereinafter referred to as "Releasee".
  2. Releasor(s) have read and understand the rules and regulations of the TALENT COMPETITION and agrees to comply with them in all respects or be disqualified from participation.
  3. Releasor(s) hereby authorizes and permits Youth Focus Inc., and the TALENT COMPETITION Officials, to utilize, at their discretion, any telecasts, radio broadcasts, motion pictures, video, photographs of contestant and information submitted by the contestant on all official forms for advertising, publicity, and promotional purposes without compensation of any kind to Releasor(s).
  4. In consideration for Releasee allowing Releasor(s) to enter and participate in the TALENT COMPETITION, said Releasor(s), for self, spouse, heirs, legal representatives, executors, administrators, successors and assignees, does hereby fully release Youth Focus, Inc., its directors and agents and all other persons and associations related thereto, from any and all claims, demands, damages, actions, causes of action, or suits at law or in equity, of any kind or nature, known or unknown, the Releasor(s) had, now have, or may have in the future, in any matter arising out of Releasor(s) participation and performance in the Talent Competition, and/or the use by Releasee of photographs or information furnished by Releasor(s) for advertising, publicity and promotional purposes.
  5. Releasor understands that Releasee has not agreed or promised to do or omit to do any act or thing not contained in this release.
  6. Releasor states that no representative of fact or opinion was made to him by defendant or anyone on defendants behalf to induce the release.
  7. In the event it shall become necessary to bring suit in connection with any provision of this agreement, the prevailing party shall be paid such sum as the court may adjudge as reasonable attorney's fees.
  8. This writing constitutes the entire agreement between the parties. No modification or waiver of this agreement shall be valid unless in writing signed by the parties. Neither party shall be bound by any representation, warranty, promise, statement, or information, unless it is specifically set forth herein. This agreement shall bind, and inure to the benefit of heirs, executors, administrators, successors and assigns of the parties.
- The undersigned hereby declare that the terms of this release have been completely read, and are fully understood and voluntarily accepted by them.

IN WITNESS WHEREOF, the parties have executed this agreement, this \_\_\_\_\_ day of \_\_\_\_\_ 2011.

\_\_\_\_\_  
RELEASEE: Parent or Guardia

\_\_\_\_\_  
RELEASOR(S): Youth Focus Inc.,

## Division Narratives

.....  
**DIVISIONS D AND 4 SONG AND DANCE** This division shall include all SONG AND DANCE NUMBERS. **TIME LIMIT-FIVE (5) MINUTES.**  
.....

.....  
**DIVISIONS E AND 5 VOCAL POPULAR WITH OR WITHOUT BACKGROUND VOCALS**--This division shall include contemporary songs, which have been classified or released as popular songs. **TIME LIMIT-FIVE (5) MINUTES.**  
.....

.....  
**DIVISIONS F AND 6 VOCAL COUNTRY WITH OR WITHOUT BACKGROUND VOCALS**--This division shall include songs generally recognized and accepted as COUNTRY as performed by Country Artists and those which are recognized and played by Country Radio Stations throughout America or original compositions which strictly adhere to a COUNTRY style and format of music. **TIME LIMIT-FIVE (5) MINUTES.**  
.....

.....  
**DIVISIONS G AND 7 VOCAL BROADWAY/SHOW TUNES WITH OR WITHOUT BACKGROUND VOCALS**--This division shall include songs which are generally recognized and accepted as MUSICAL-THEATER/SHOW TUNES as found in Broadway Shows and Motion Picture Musicals. **SONGS IN THIS DIVISION ARE ENCOURAGED TO BE DRAMATIZED AND ACTED OUT IN ACCORDANCE WITH THE STANDARDS OF MUSICAL-THEATER AS WOULD BE INCORPORATED IN LITTLE THEATER, LIGHT OPERA, OR PROFESSIONAL MUSICAL-THEATER--HOWEVER THIS PROVISION IS NOT MANDATORY AND IS SIMPLY RECOMMENDED.** **TIME LIMIT-FIVE (5) MINUTES.**  
.....

.....  
**DIVISIONS H AND 8 SONGS OF INSPIRATION WITH OR WITHOUT BACKGROUND VOCALS**--This division shall include songs dedicated to DEITY, RELIGION, HALLOWED PLACES OR THINGS AS PERFORMED FOR INSPIRATIONAL/RELIGIOUS/PATRIOTIC SERVICES, FUNCTIONS AND ACTIVITIES. SONGS IN THIS DIVISION MAY BE DRAMATIZED AND ACTED OUT IN ACCORDANCE WITH THE STANDARDS OF RELIGIOUS/SACRED MUSIC. **TIME LIMIT-FIVE (5) MINUTES.**  
.....

.....  
**DIVISIONS I AND 9 VOCAL PERFORMANCE ALL OTHER CATEGORIES WITH OR WITHOUT BACKGROUND VOCALS**--This Division shall include CLASSICAL/SEMI-CLASSICAL OR any or all vocals not entered in any of the other DIVISIONS. **TIME LIMIT-FIVE (5) MINUTES.**  
.....

.....  
**DIVISIONS J AND 10 VOCAL PERFORMANCE OPEN WITH OR WITHOUT BACKGROUND VOCALS**--This Division allows entrants an additional category to perform without competing against them. It is to consist entries not entered in any of the other DIVISIONS. **TIME LIMIT-FIVE (5) MINUTES.**  
.....

.....  
**DIVISIONS K AND 11 INSTRUMENTAL PERFORMANCE**--This Division SHALL INCLUDE ALL INSTRUMENTAL PERFORMANCES CLASSICAL OR POPULAR ( i.e., piano, woodwinds, brass, percussion, strings etc.) **THERE ARE TO BE NO PROPS USED IN THIS DIVISION.** Stools, chairs or other sitting devices may be used in this Division. **TIME LIMIT- UP TO SEVEN (7) MINUTES IN LENGTH.**  
.....

**Stage Size: 12' X 20'**

**GREATER BAY AREA**

**Performing Arts Competition**

**Sponsored by Youth Focus Inc.**

**“dedicated to the advancement of youth”**

**November 2 & 3, 2011**

***•Every Participant Receives An Award.....•Beautiful Awards.....•Divisions Divided According To Ages..... •Participants May Receive More Than One Placement On The Final Ballot.....• Divisions Will Be Broken Up Into Two Divisions If There Are More Than Ten In A Division..... •Competent and Knowledgeable Judges.....•Professionally Conducted.....  
•Experienced Staff.....•Friendly Wholesome Family Environment.....***

# **GREATER BAY AREA**

## **Performing Arts Competition**

**Sponsored by Youth Focus Inc.**

*“dedicated to the advancement of youth”*

**November 2 & 3, 2011**

*•Every Participant Receives An Award.....•Beautiful Awards.....•Divisions Divided According To Ages.....  
•Participants May Receive More Than One Placement On The Final Ballot.....• Divisions Will Be Broken  
Up Into Two Divisions If There Are More Than Ten In A Division..... •Competent and Knowledgeable Judges.....  
•Professionally Conducted..... •Experienced Staff.....•Friendly Wholesome Family Environment.....*

### *Place of Competition*

*Bayside Community Church-1901 Cottle Ave. San Jose, CA 95125*

*for further information contact: Youth Focus Inc., at: 408.448.5437(KIDS) 1.866.939-6884*

**email: youthfocus@aol.com**

**Entry Deadline: Tuesday October 16 2011 (Postmarked or Delivered)**

**MAIL ALL ENTRY FORMS OR FAX TO:**

**Youth Focus Inc. 1901 Cottle Ave. San Jose, CA 95125 or 408.448.5400**

**Make Checks Payable to Youth Focus Inc.**

**VISIT OUR WEBSITE AT: [www.youth-focus.org](http://www.youth-focus.org)**

**GREATER BAY AREA**  
**Performing Arts Competition**  
**c/o YOUTH FOCUS INC.**  
**1901 Cottle Ave.**  
**San Jose, CA 95125**

***“A Celebration of the Arts”***

**TIME SENSITIVE MATERIAL**